

TPFV-98ET

90 IPERLOTUS

ELECTRIC SOLID TOP WITH OVEN

Solid top on electric fan oven cm.

55x36x34h, temp: 50÷300°C, with 1 grid

cm.53x32,5 GN1/1 - Plate cm. 70x68 4 zones

(included 1 Head end filler strip mod.TPA-9)



Construction - Fabricated using CrNi 18/10 AISI 304 grade Stainless Steel Scotch-Brite Satin polish Finish, incorporating 2mm thick worktop, rounded edges, chromed details and rear splash back. Knobs with waterproof grades IPX5. Model - Professional Electric Solid Top with Static or Ventilated Electric Oven. 20mm thick chrome-molibdeno top for the best in heat conductivity. Four position thermostatic control to 450degC. Large GN 1/1 Ventilated Oven and large GN 2/1 Static Oven with wide doors and timers. Maintenance - All serviceable parts are accessible by the easy removal of front control panel. Fittings - Appliance is supplied with adjustable feet.



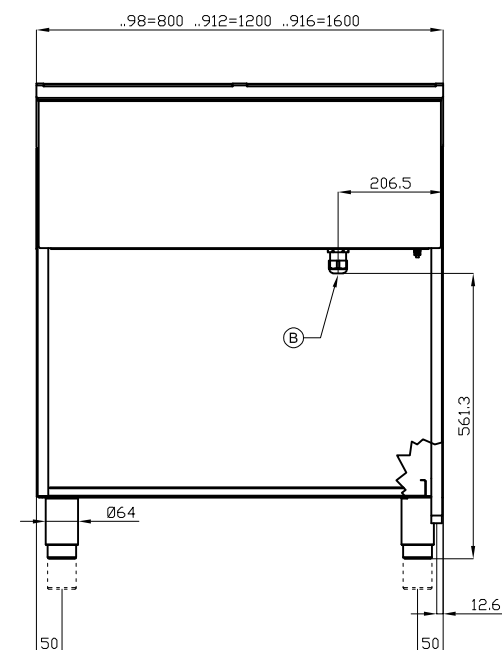
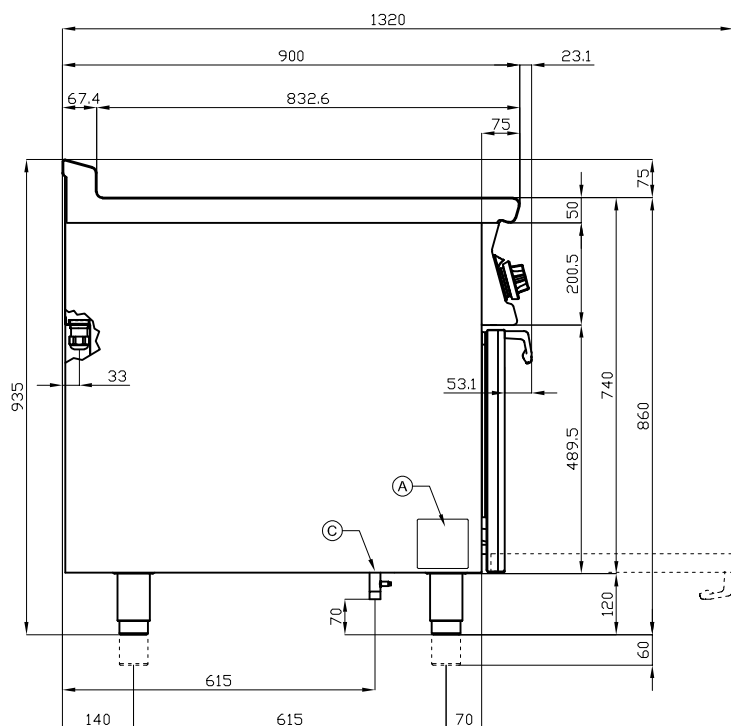
ITALIAN CULINARY ART

The pictures are purely representative. The manufacturer reserves the right to modify the technical data and models without previous notice.

TPFV-98ET

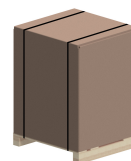
90 IPERLOTUS

ELECTRIC SOLID TOP WITH OVEN



A	Data plate		B	Electrical connection	
---	------------	--	---	-----------------------	--

MODEL: TPFV-98ET
DIMENSIONS: cm. 80x 90x 90h
ELECTRIC POWER: 18,92 kW
VOLTAGE: 400V~3N
FREQUENCY: 50/60 Hz



kg: 180
m³: 0.894
mm: 830x970x1110

BUY LOTUS BUY 

The pictures are purely representative. The manufacturer reserves the right to modify the technical data and models without previous notice.



LOTUS S.P.A. Via Calmaor, 46
 31020 San Vendemiano (TV) - Italy
 Tel. + 39 0438 778020 / 778468
 Fax + 39 0438 778277
 www.lotuscookers.it - lotus@lotuscookers.it